



**India Meteorological Department
(Ministry of Earth Sciences)**

BULLETIN NO. 6 (ARB/02/2022)

TIME OF ISSUE:1230 HOURS IST

DATED: 13.08.2022

FROM: INDIA METEOROLOGICAL DEPARTMENT (FAX NO. 24643965/24699216/24623220)

TO: CONTROL ROOM, NDM, MINISTRY OF HOME AFFAIRS (FAX.NO. 23093750)

CONTROL ROOM NDMA (FAX.NO. 26701729)

CABINET SECRETARIAT (FAX.NO.23012284, 23018638)

PS TO HON'BLE MINISTER FOR S & T AND EARTH SCIENCES (FAX NO.23316745)

SECRETARY, MOES (FAX NO. 24629777)

H.Q. (INTEGRATED DEFENCE STAFF AND CDS) (FAX NO. 23005137/23005147)

DIRECTOR GENERAL, DOORDARSHAN (23385843)

DIRECTOR GENERAL, AIR (23421105, 23421219)

PIB MOES (FAX NO. 23389042)

UNI (FAX NO. 23355841)

D.G. NATIONAL DISASTER RESPONSE FORCE (NDRF) (FAX NO. 26105912, 2436 3260)

DIRECTOR, PUNCTUALITY, INDIAN RAILWAYS (FAX NO. 23388503)

CHIEF SECRETARY, GUJARAT (FAX NO. 079-23250305)

CHIEF SECRETARY, DAMAN & DIU (FAX NO. 0260-2230775)

CHIEF SECRETARY, DADRA & NAGAR HAVELI (FAX NO. 0260-2645466)

CHIEF SECRETARY, GOA (FAX NO. 0832-2415201)

CHIEF SECRETARY, MAHARASHTRA (FAX NO. 022- 22028594)

CHIEF SECRETARY, KARNATAKA (FAX NO. 080-22258913)

CHIEF SECRETARY, KERALA (FAX NO. 0471-2327176)

ADMINISTRATOR, LAKSHADWEEP ISLANDS (FAX NO. 0413-262184)

CHIEF SECRETARY, TAMILNADU (FAX NO. 044-25672304)

ADMINISTRATOR, ANDAMAN & NICOBAR ISLANDS (FAX NO. 03192- 232656)

CHIEF SECRETARY, PUDUCHERRY (FAX NO 0413-2334145)

CHIEF SECRETARY, ANDHRA PRADESH (FAX NO. 0863-2441029, 08645-246600)

CHIEF SECRETARY, ODISHA (FAX NO. 0674-2536660)

CHIEF SECRETARY, WEST BENGAL (FAX NO. 033-22144328)

Sub: (A) Depression over northwest and adjoining northeast Arabian Sea

(B) Likely formation of depression over northwest Bay of Bengal around 14th August

(A) Depression over northwest and adjoining northeast Arabian Sea

The depression over northwest and adjoining northeast Arabian Sea moved nearly westwards with a speed of 10 kmph during past 6 hours and lay centered at 0830 hours IST of today, the 13th August, 2022, over the same region near latitude 22.1°N and longitude 63.6°E, about 560 km west-southwest of Naliya (Gujarat), 630 km west of Porbandar (Gujarat), 470 km southwest of Karachi (Pakistan) and 460 km southeast of Chahbahar (Iran).

It is very likely to move northwestwards and weaken into a well marked low pressure area during next 06 hours. Thereafter, the remnant well marked low pressure area is likely to recurve north-northeastwards and weaken further gradually.

Warnings:

(i) Wind warning:

- Squally wind speed reaching 45-55 kmph gusting to 65 kmph is very likely over northwest & adjoining northeast and central Arabian Sea today 13th August. The wind speed would decrease gradually becoming 40-50 kmph gusting to 60 kmph over the same region on 14th.
- Squally wind speed reaching 40-50 kmph gusting to 60 kmph is very likely along & off Gujarat, Maharashtra and Karnataka coasts today on 13th August.

(ii) Sea condition

Sea condition is likely to be rough to very rough over northwest & adjoining northeast Arabian Sea, central Arabian Sea and along & off Gujarat, Maharashtra and Karnataka coasts today on 13th & then on 14th August.

(iii) Fishermen Warning

Fishermen are advised not to venture into north & central Arabian Sea and along & off Gujarat and Maharashtra coasts on 13th and 14th August.

(B) Likely formation of depression over northwest Bay of Bengal around 14th August

A low pressure area has formed over north Bay of Bengal at 0830 hours IST of today, the 13th August. It is likely to move west-northwestwards, become well marked during next 12 hours and concentrate into a depression during subsequent 24 hours.

Warnings:

(i) Rainfall:

Odisha: Rainfall at most places with heavy to extremely heavy rainfall at isolated places very likely on 13th August and heavy to very heavy rainfall at a few places with extremely heavy rainfall at isolated places very likely on 14th August. The intensity of rainfall would decrease on 15th August with isolated heavy rainfall over western Odisha.

Gangetic West Bengal: Rainfall at most places with heavy rainfall at isolated places likely over coastal districts on 13th and 14th August.

Jharkhand: Rainfall at most places with heavy rainfall at isolated places likely over South Jharkhand on 13th and 14th August.

Chattisgarh: Rainfall at most places with heavy to very heavy rainfall at isolated places on 13th and 15th August and heavy to very heavy rainfall at a few places with extremely heavy rainfall at isolated places on 14th August.

East Madhya Pradesh: Rainfall at most places with heavy to very heavy rainfall at a few places & extremely heavy rainfall at isolated places on 14th August and isolated heavy to very heavy rainfall on 15th August.

(ii) Wind:

Squally wind speed 45-55 kmph gusting to 65 kmph is very likely over north and adjoining central Bay of Bengal and along & off Bangladesh, West Bengal, Odisha and adjoining North Andhra Pradesh coasts on 13th and 14th August.

(iii) Sea condition

Sea condition is likely to be rough to very rough over north and adjoining central Bay of Bengal and along & off Bangladesh, West Bengal, Odisha and adjoining North Andhra Pradesh coasts on 13th and 14th August.

(iii) Fishermen Warning

Fishermen are advised not to venture into north and adjoining central Bay of Bengal and along & off Bangladesh, West Bengal, Odisha and adjoining North Andhra Pradesh coasts on 13th and 14th August.

Both the systems are under continuous surveillance and the next message will be issued at 1430 hours IST of today, the 13th August, 2022.

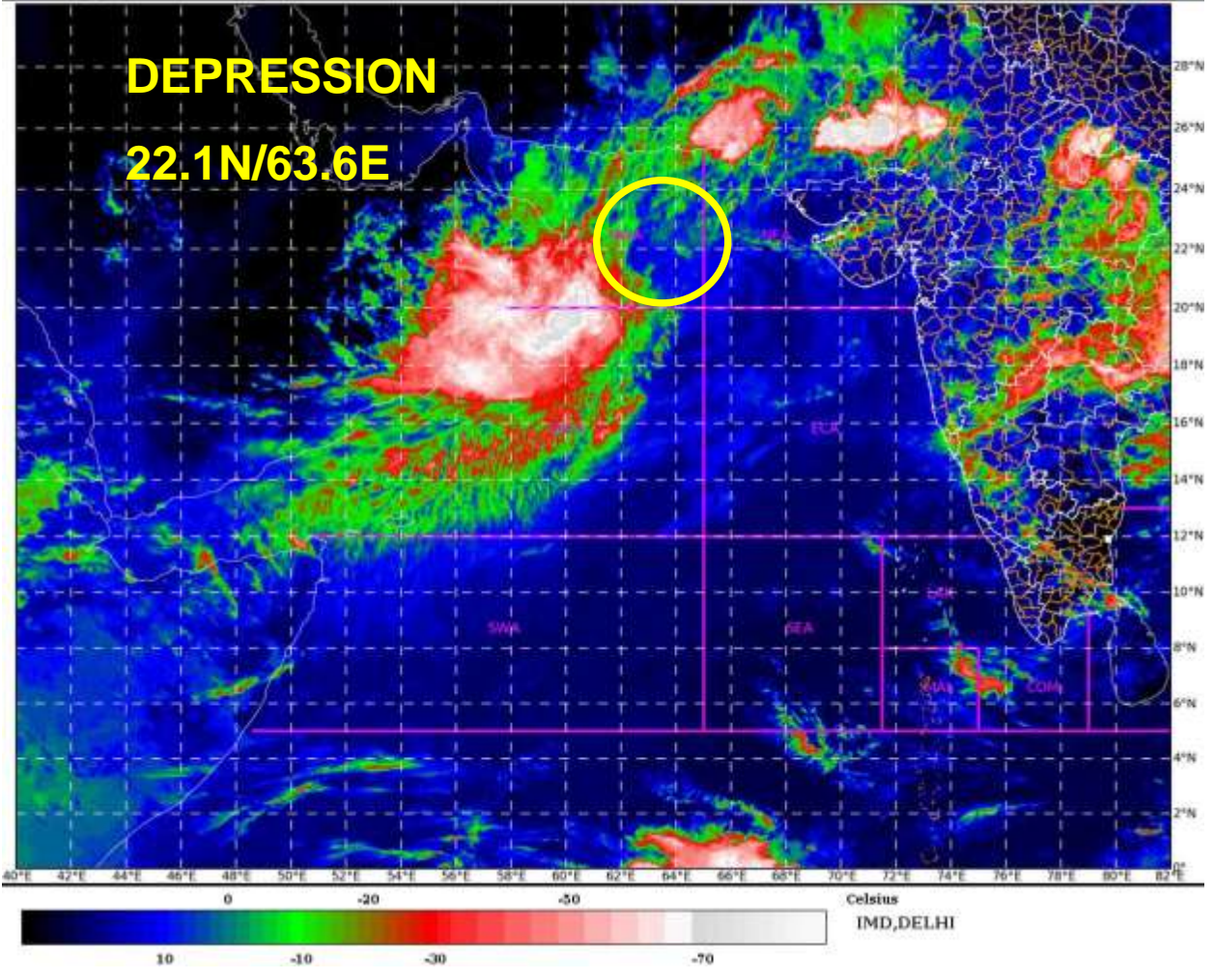
(M. Sharma)
Scientist D, Cyclone Warning, New Delhi

Copy to: ACWC Mumbai/ ACWC Kolkata/ ACWC Chennai/ CWC Bhubaneswar/CWCVisakhapatnam/CWC Ahmedabad/ MO Port Blair/MC Raipur/MC Bhopal/MC Hyderabad/RMC Nagpur/MC Goa/MC Bengaluru/CWC Thiruvananthapuram

LEGEND: Heavy Rainfall: 64.5 to 115.5mm, **Very Heavy Rainfall:** 115.6 to 204.4mm **Most Places:** more than 76% of total stations, **Isolated Places:** Less than 25% of total

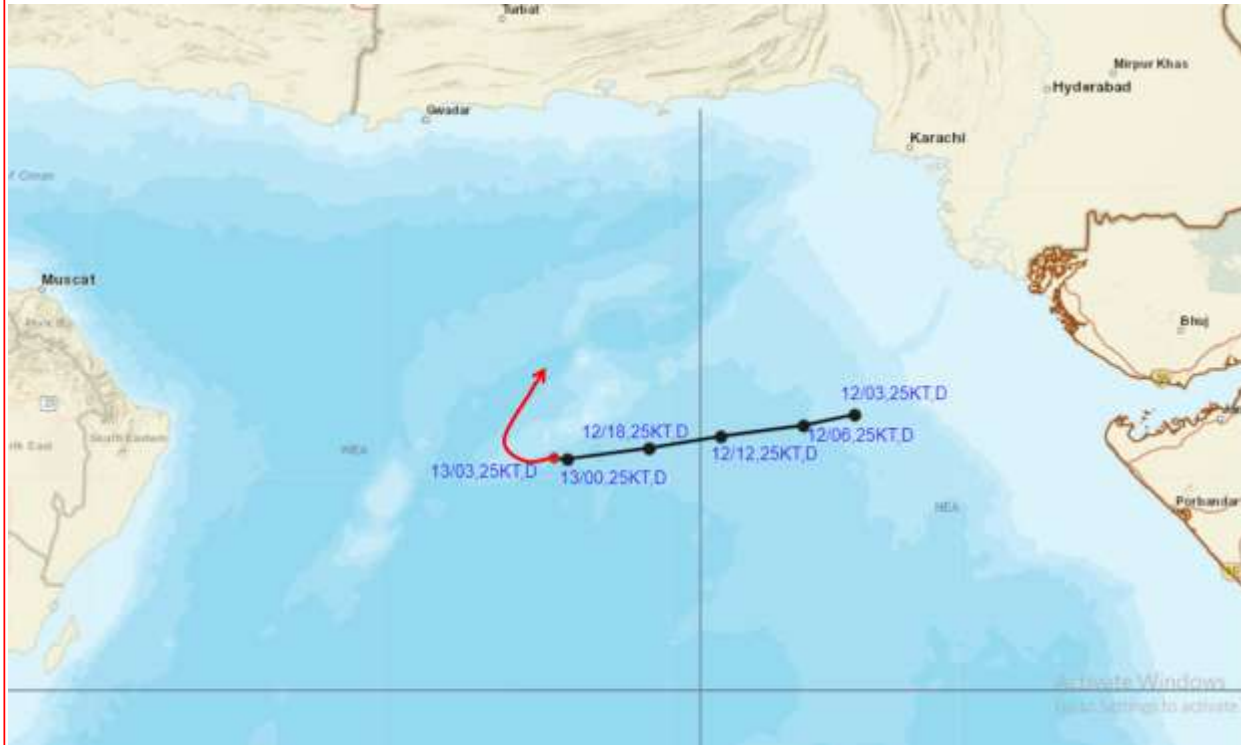
SAT : INSAT-3D IMG
IMG_TIR1_TEMP 10.8 um
ARABIAN SEA

13-08-2022/(0500 to 0527) GMT
13-08-2022/(1030 to 1057) IST





OBSERVED AND FORECAST TRACK OF DEPRESSION OVER NORTHWEST AND ADJOINING NORTHEAST ARABIAN SEA BASED ON 0300 UTC OF 13th AUGUST, 2022



DATE/TIME IN UTC
IST=UTC + 0530
L: LOW PRESSURE AREA
WML: WELL MARKED LOW PRESSURE AREA
D: DEPRESSION (17-27 KT)
DD: DEEP DEPRESSION (28-33 KT)
CS: CYCLONIC STORM (34-47 KT)
SCS: SEVERE CYCLONIC STORM (48-63KT)
VSCS: VERY SEVERE CYCLONIC STORM (64-89 KT)
ESCS: EXTREMELY SEVERE CYCLONIC STORM (90-119 KT)
SuCS: SUPER CYCLONIC STORM (\geq 120 KT)

- LESS THAN 34 KT
- 34-47 KT
- \geq 48 KT
- OBSERVED TRACK
- FORECAST TRACK
- CONE OF UNCERTAINTY